



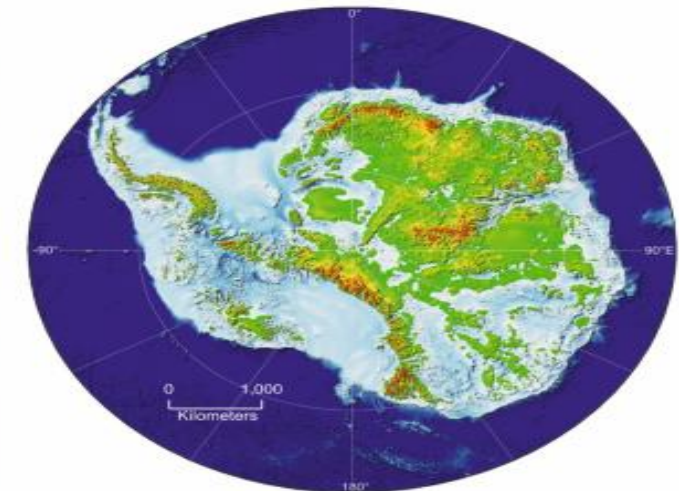
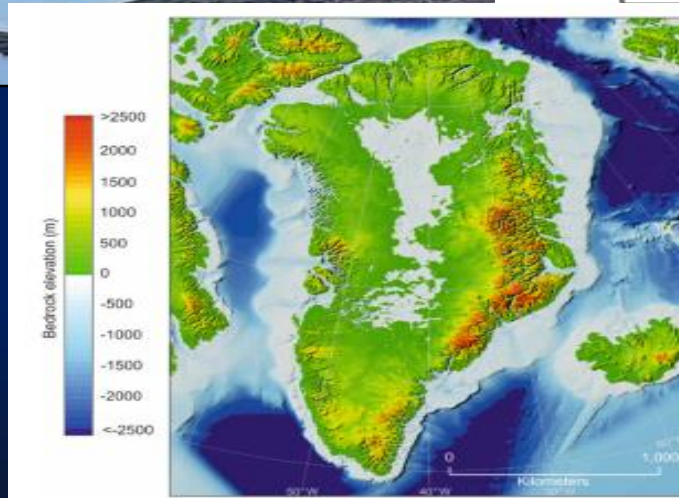
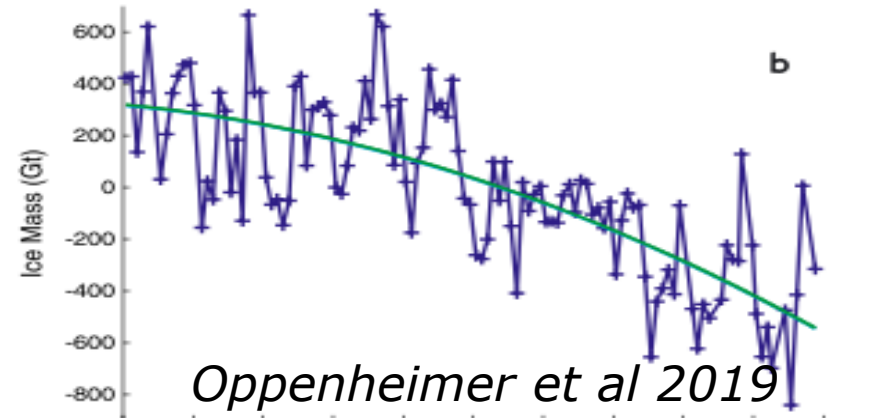
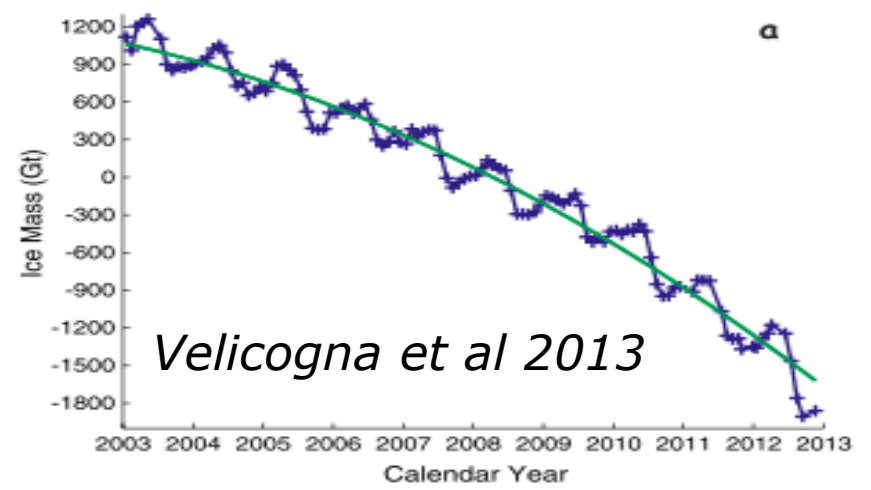
2^{da} Conferencia Regional sobre el IPCC

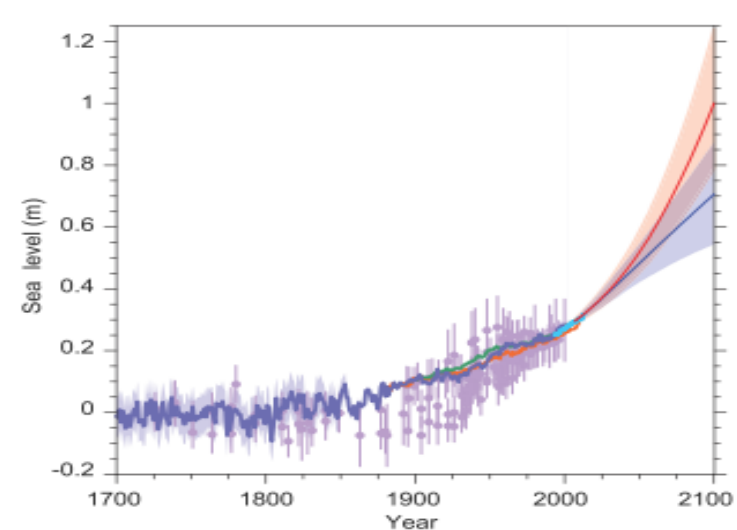
Cambio climático: conocimiento
y soluciones hacia la COP26

Federico Ignacio Isla

La reversión del nivel del mar en Sudamérica

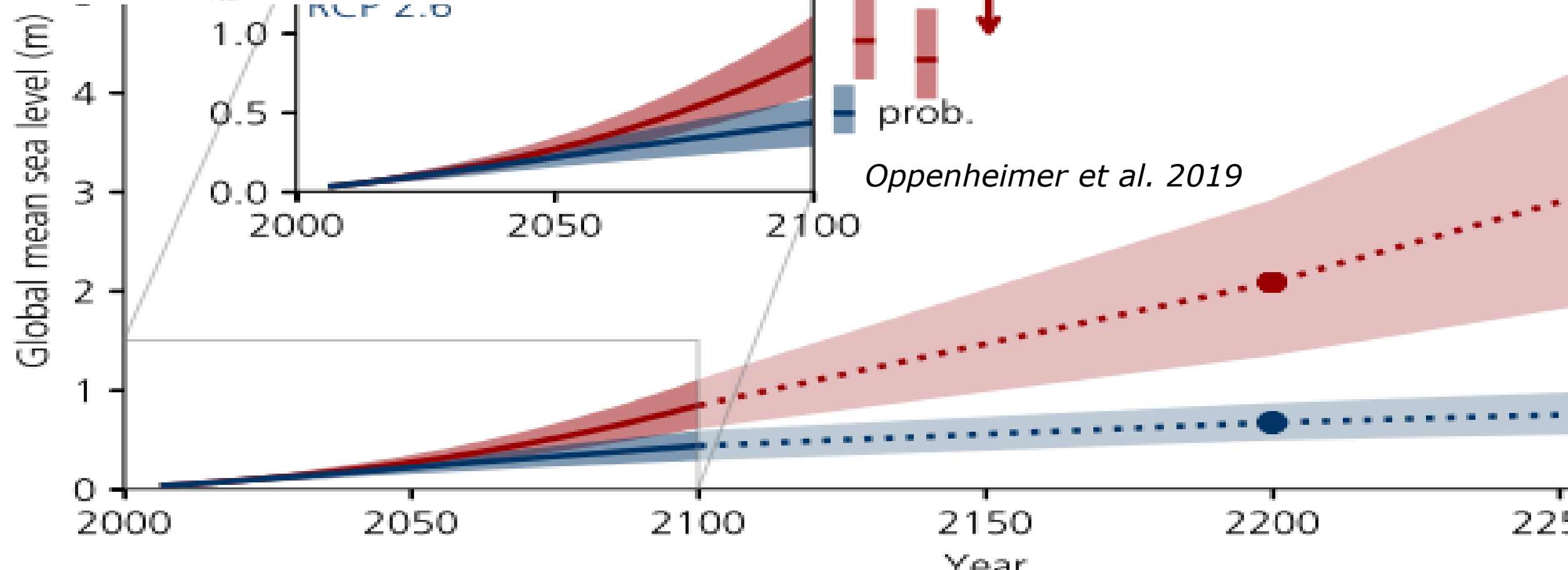
The sea level reversal in South America





Church et al 2013

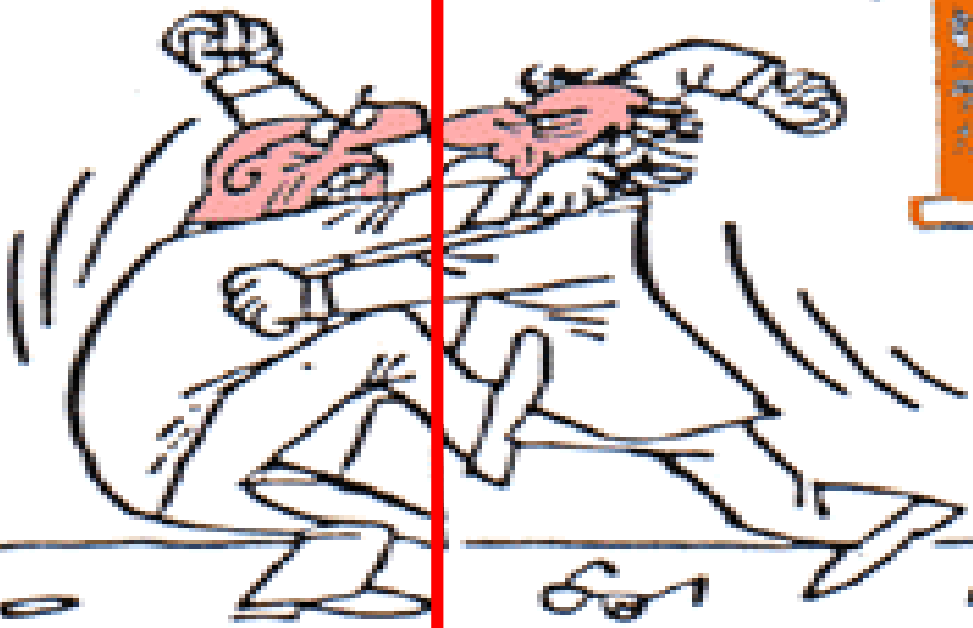
Projected SLR



Oppenheimer et al. 2019

HS

HN



Isla et al
2012



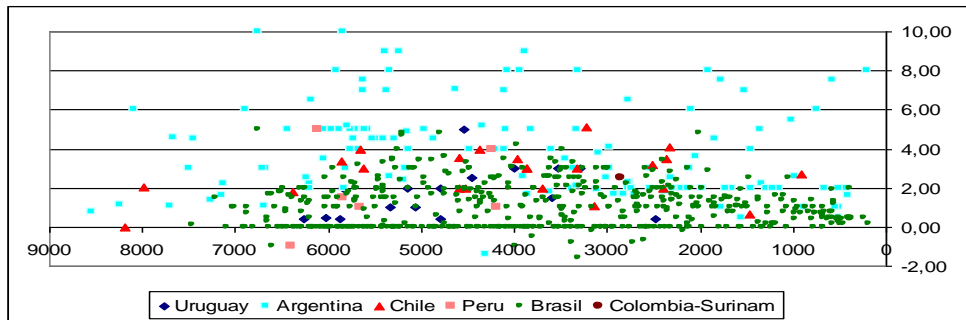
Google Earth

Image © 2021 TerraMetrics
Data SIO, NOAA, U.S. Navy, NGA, GEBCO
Image © 2021 Maxar Technologies

4 km

Planicie de Rio Chubut

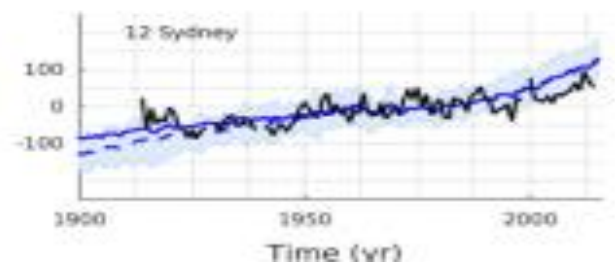
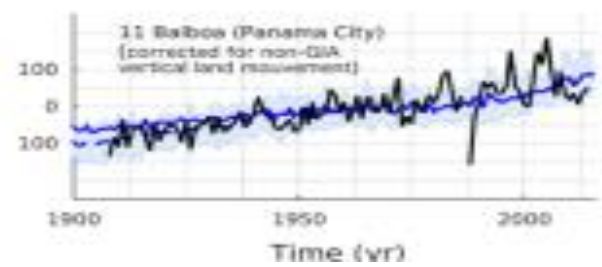
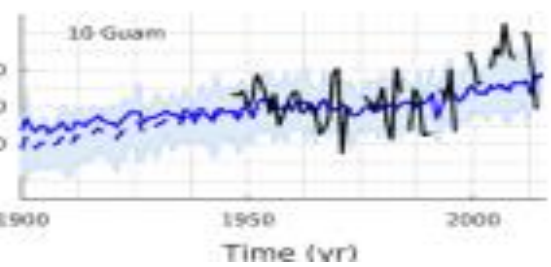
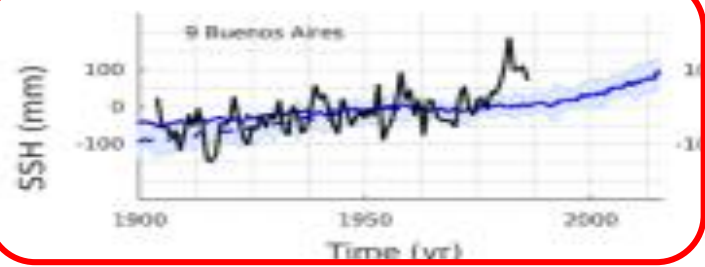
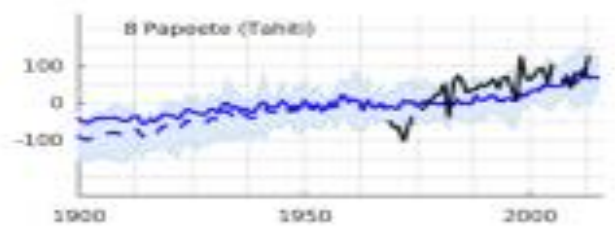
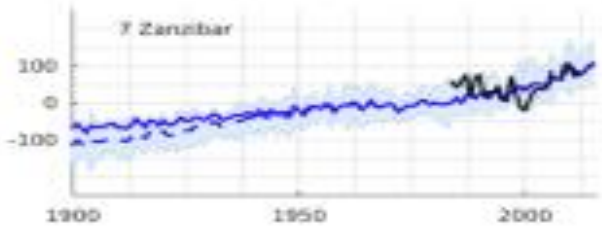
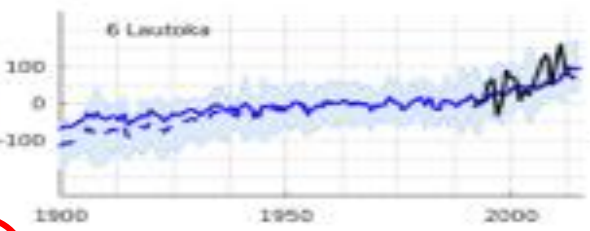
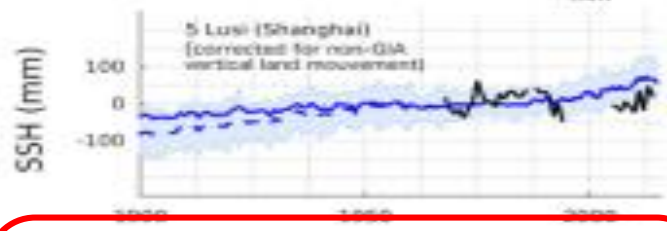
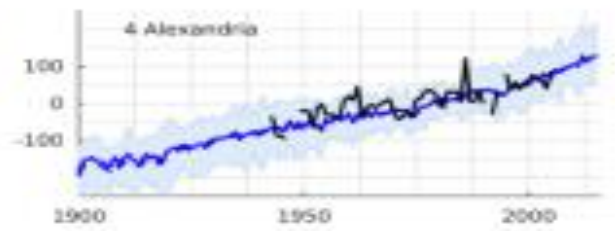
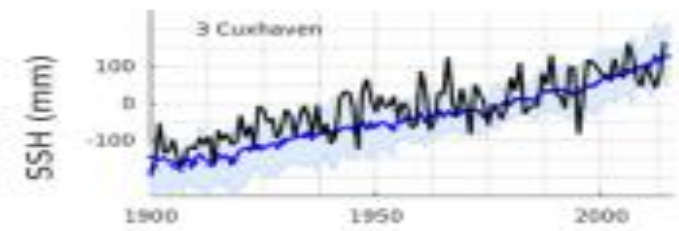
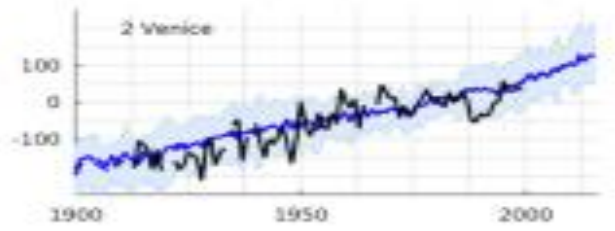
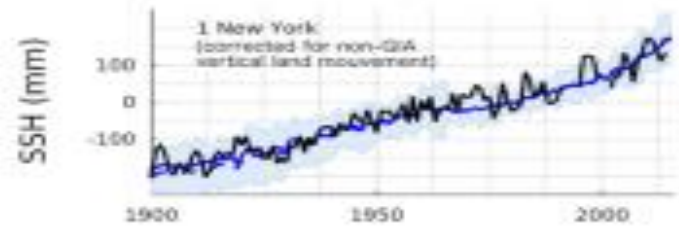
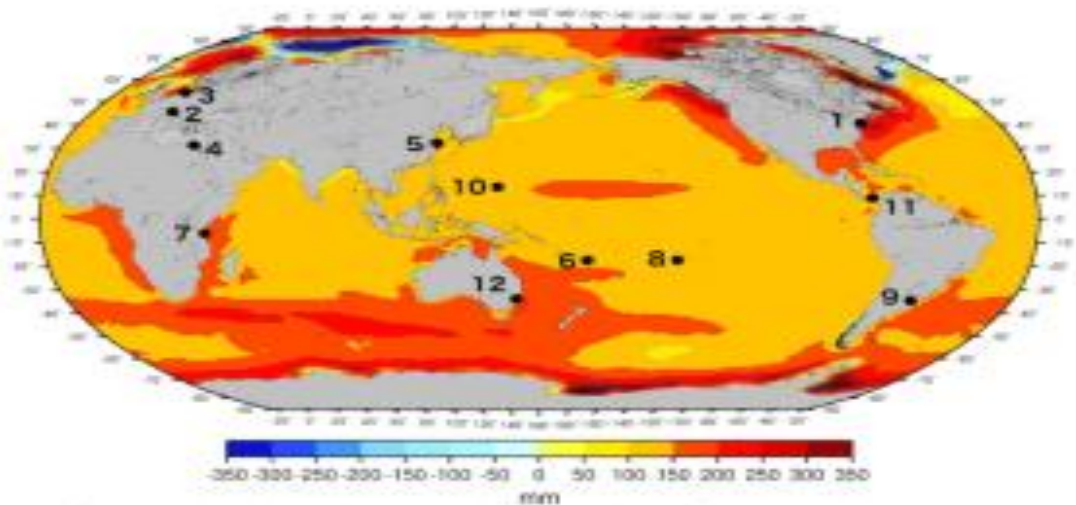
Planicie de Coronel



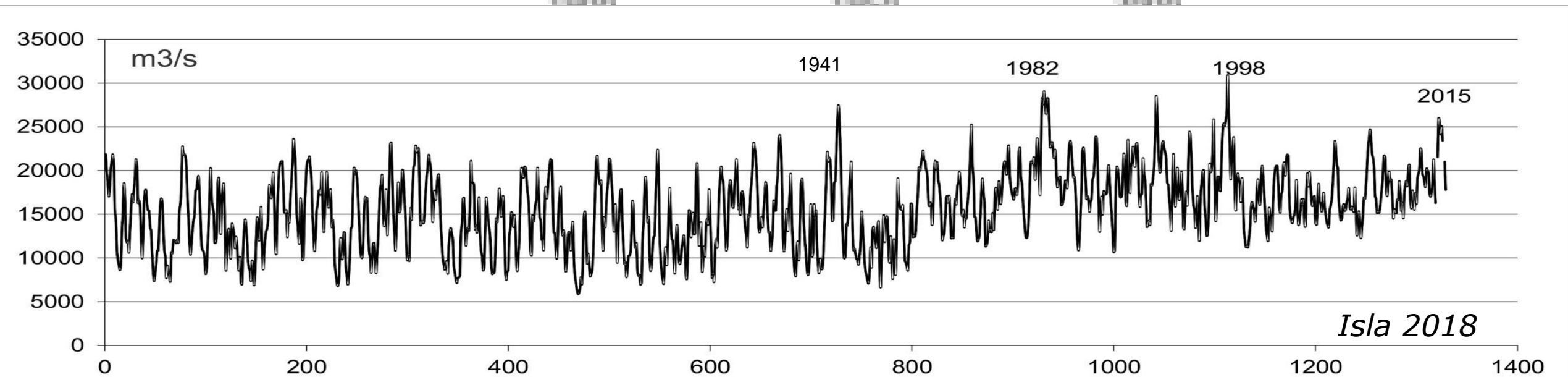
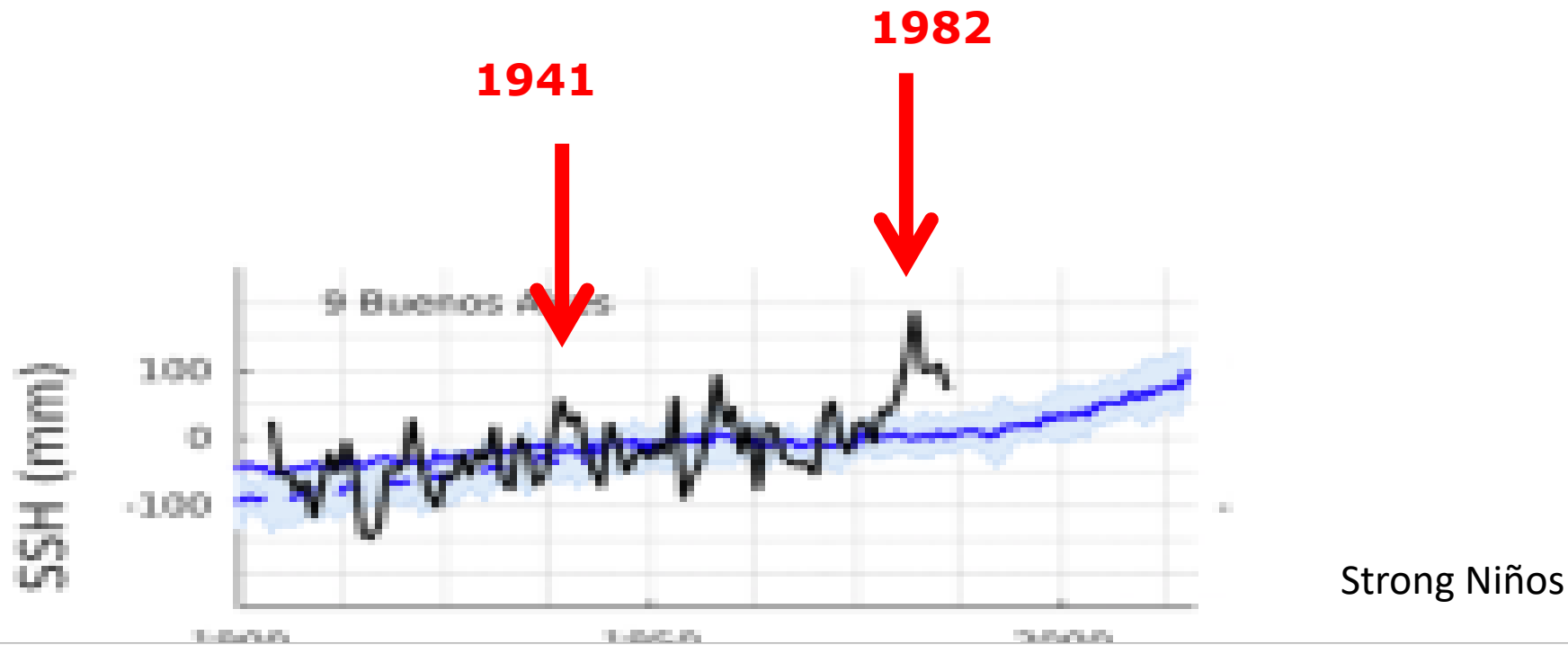
Google Earth

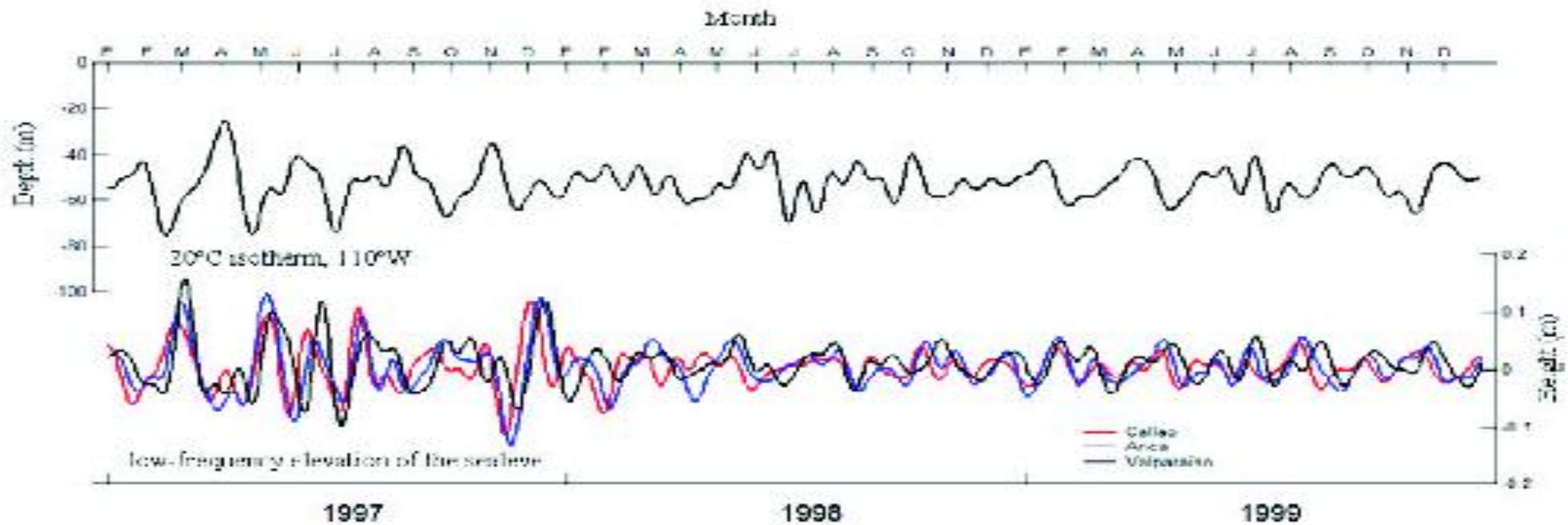
Data SIO, NOAA, U.S. Navy, NGA, GEBCO
Image © 2021 Maxar Technologies
Image © 2021 CNES / Airbus

Monti 2000

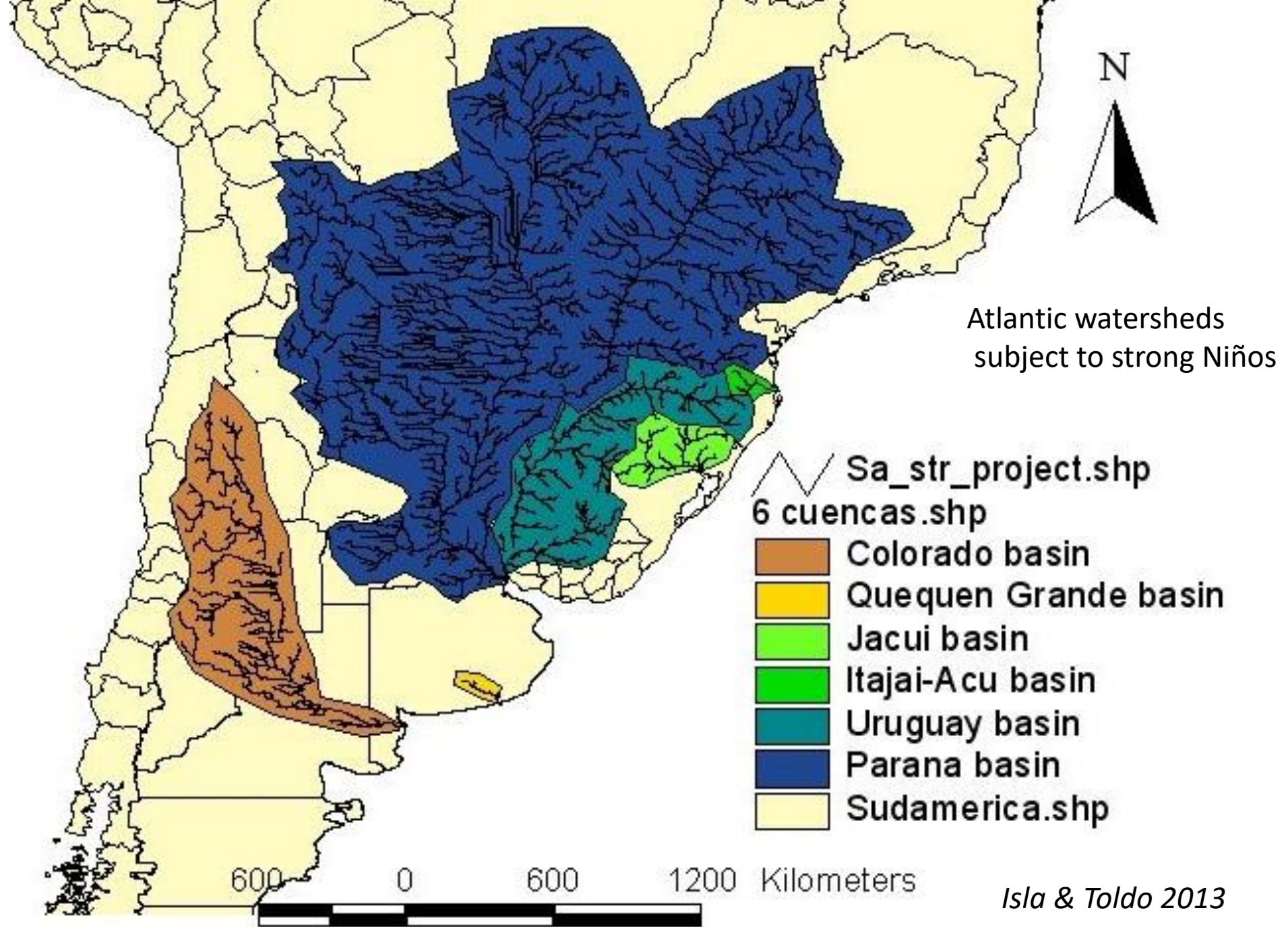


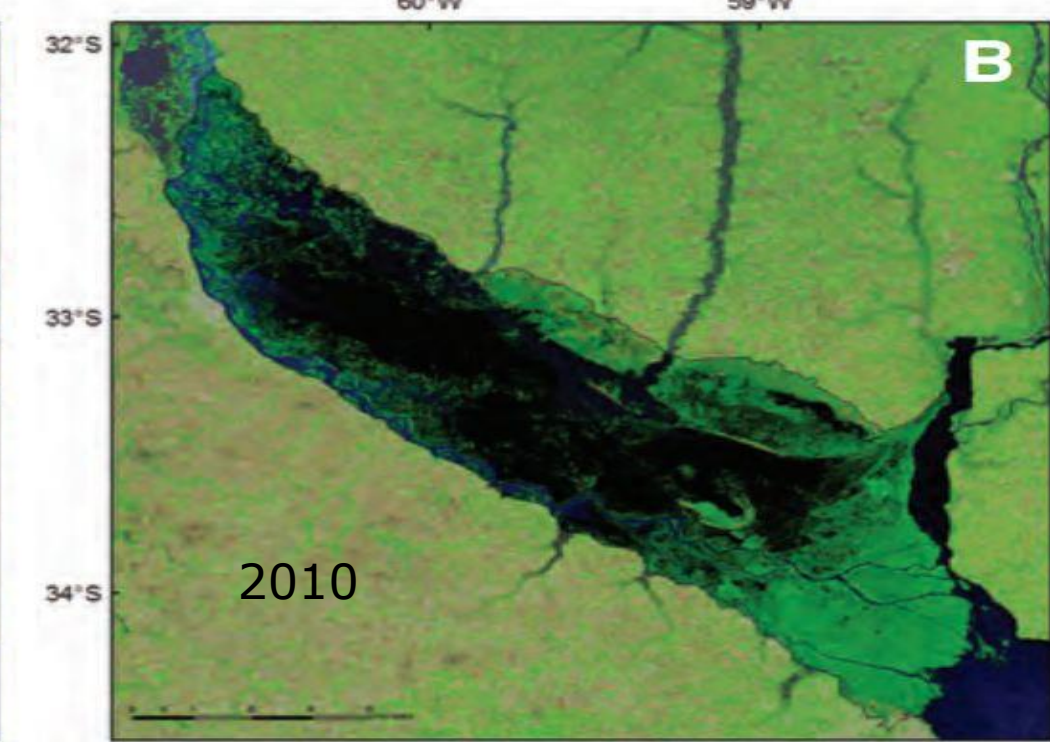
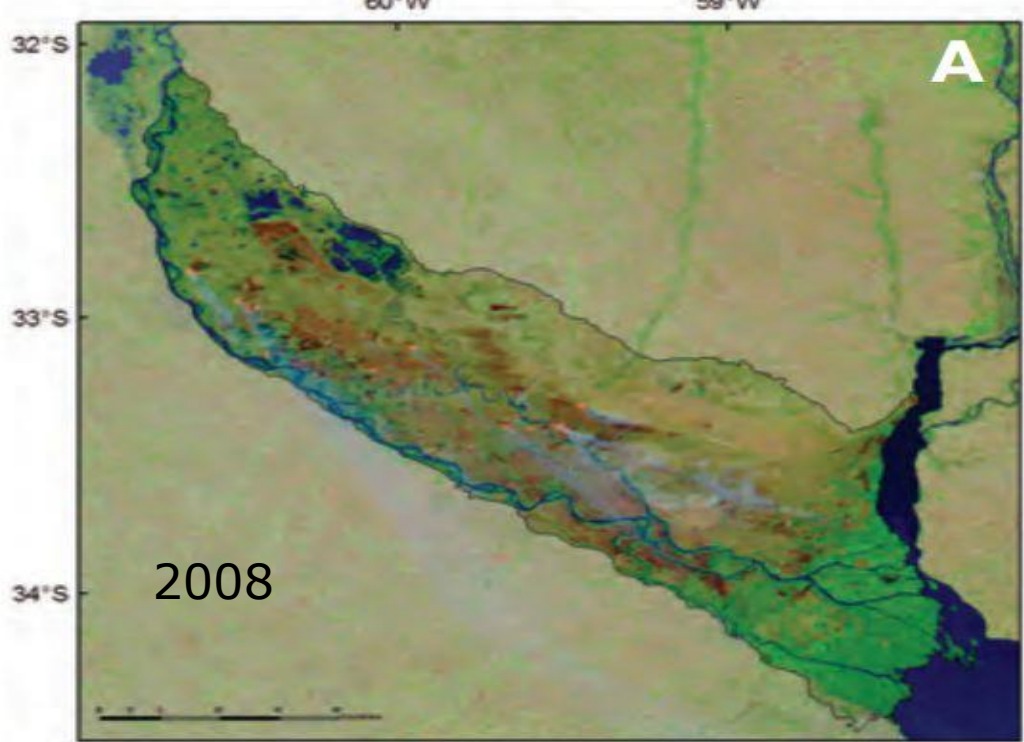
Oppenheimer et al 2019



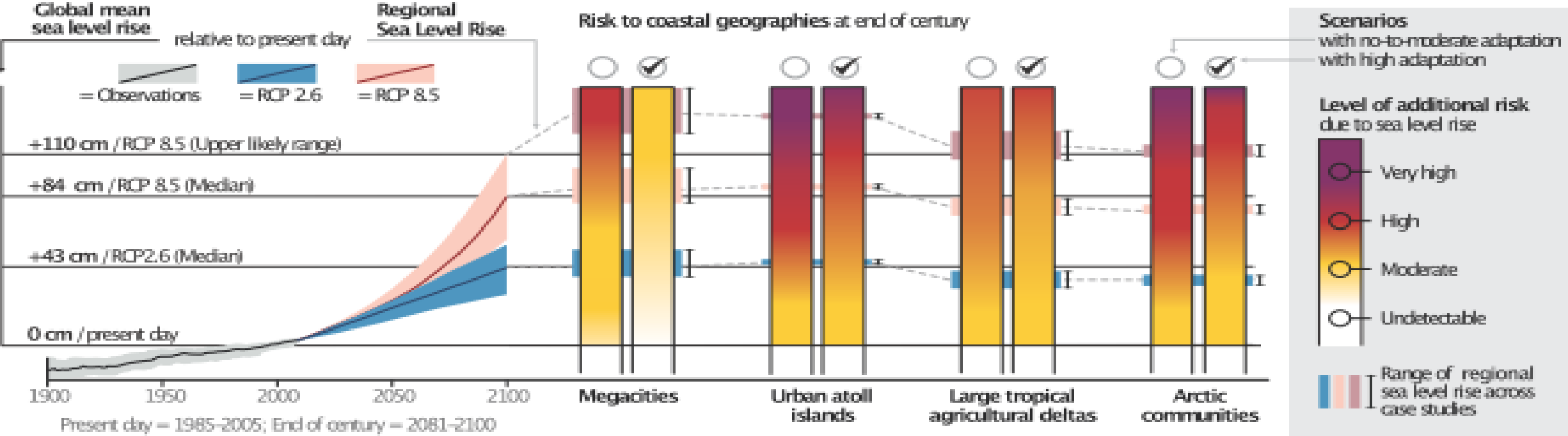


Bello et al. 2004





Risks caused by future SLR



Relación de O'Brien

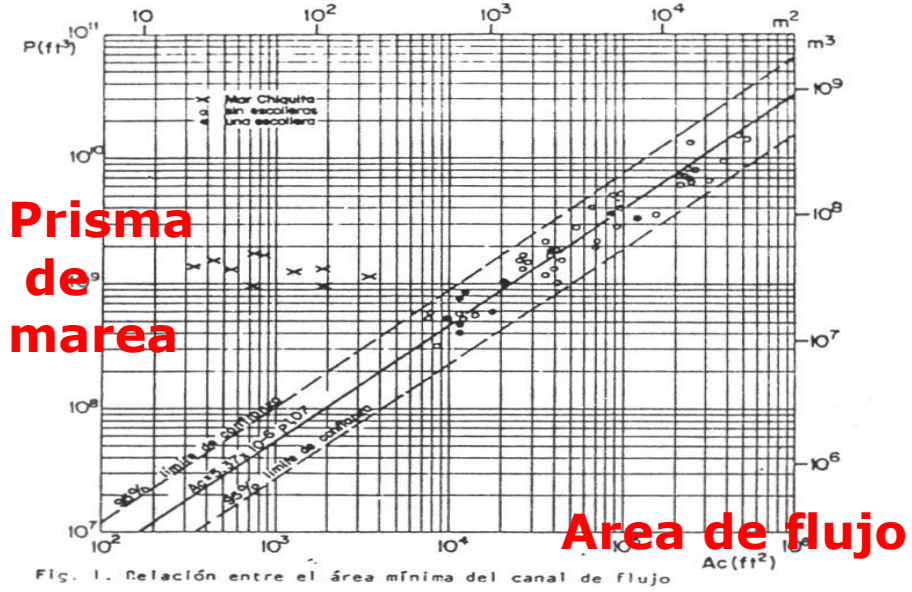


Imagen Pre-terremoto



Fig. 3. Imágenes obtenidas desde Google Earth histórico, la fecha corresponde al 12-09-2009

Lebu

Imagen post - terremoto



Fig. 4. Imágenes obtenidas desde Google Earth histórico, la fecha corresponde al 03-11-2010

Saez,
Araya,
Jimenez
2012

Tirúa

Imagen Pre-terremoto



Fig. 9. Imágenes obtenidas desde Google Earth histórico, la fecha corresponde al 05-08-2004

Imagen Post-terremoto



Fig. 10. Imágenes obtenidas desde Google Earth histórico, la fecha corresponde al 18-03-2011

Tubul

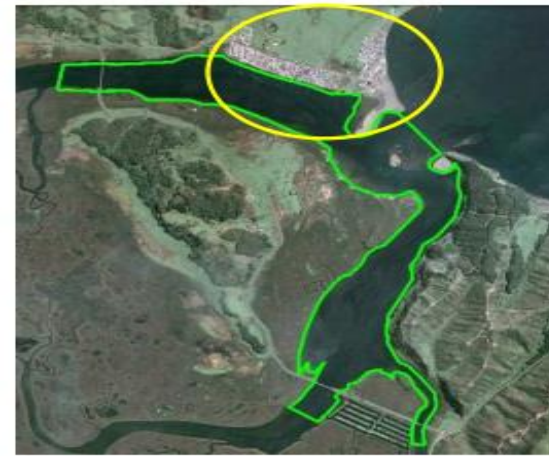


Fig. 19. Imágenes obtenidas desde Google Earth histórico, la fecha corresponde al 18-10-2009

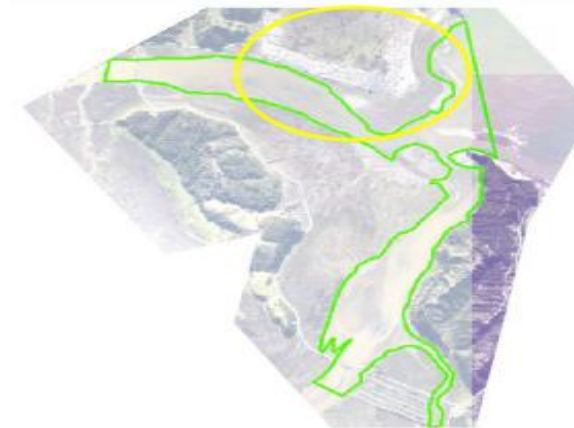
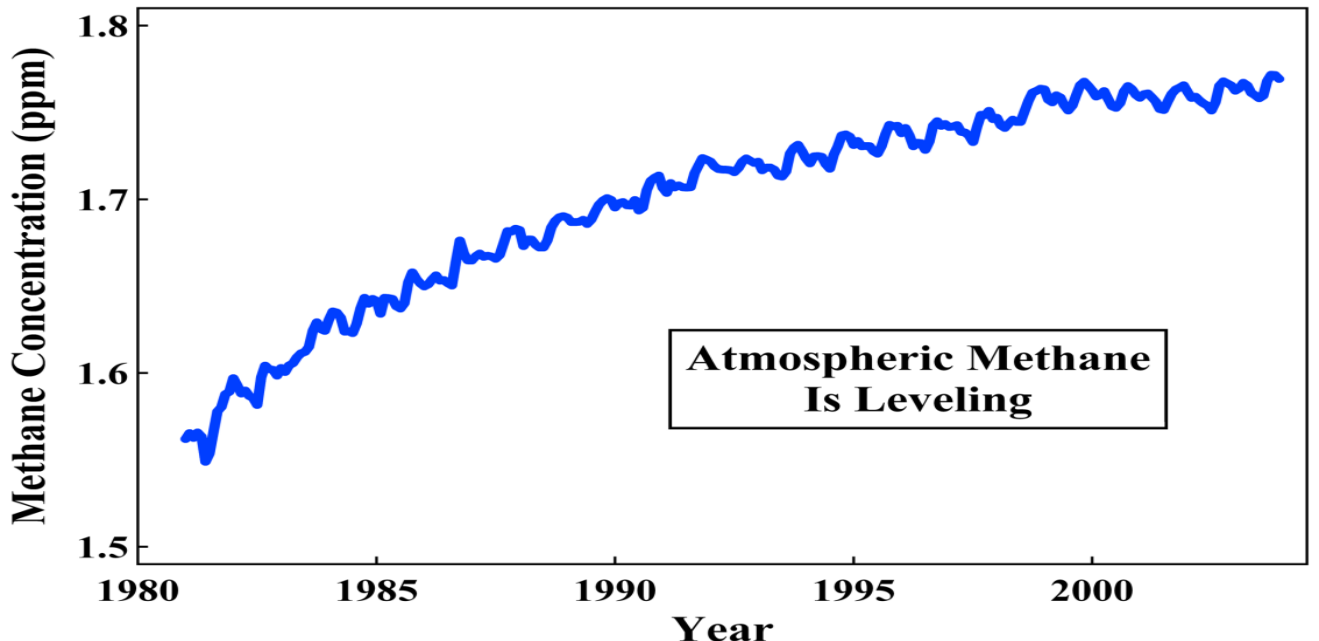
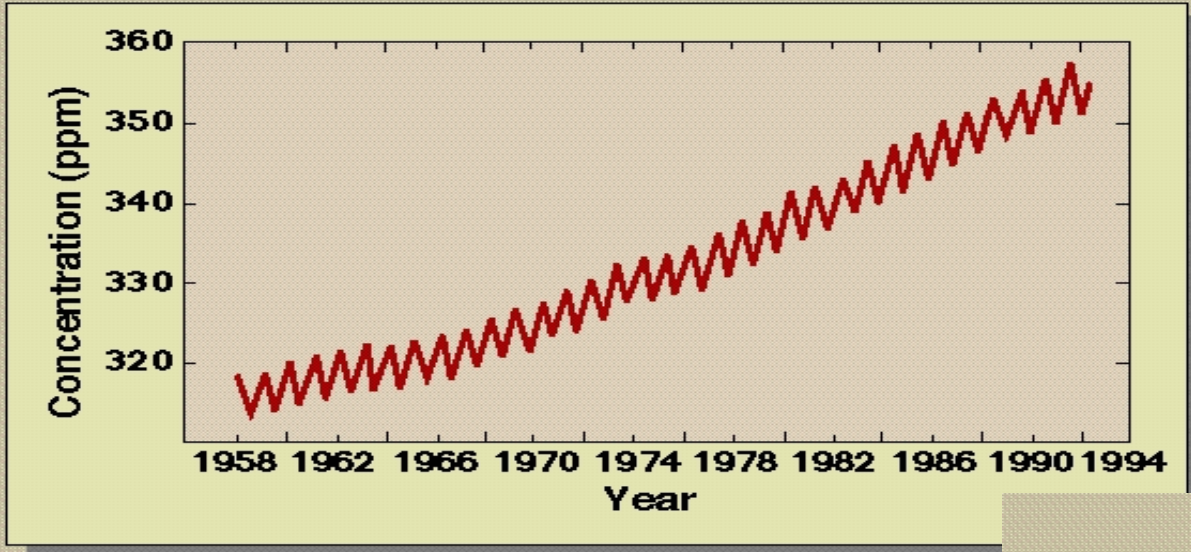
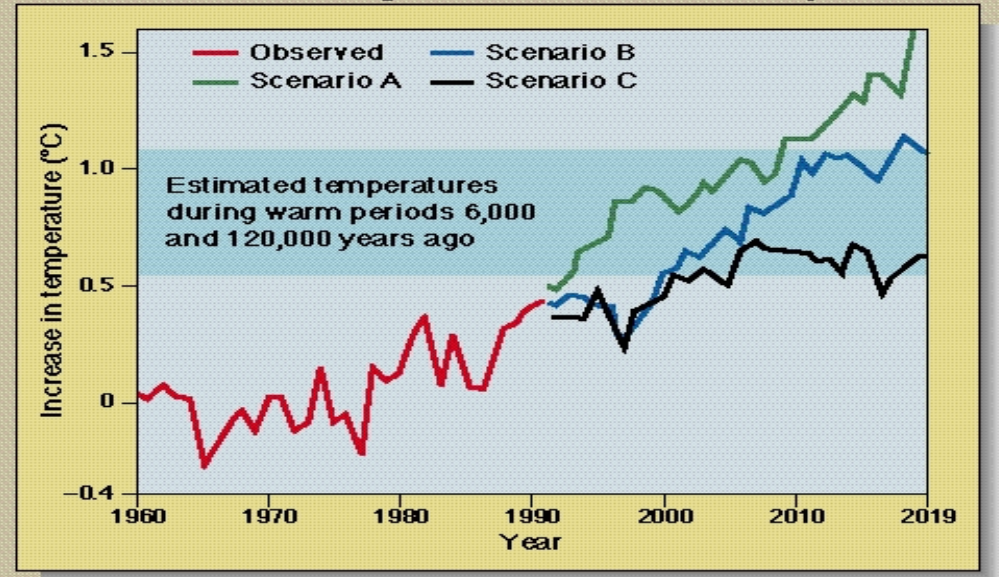


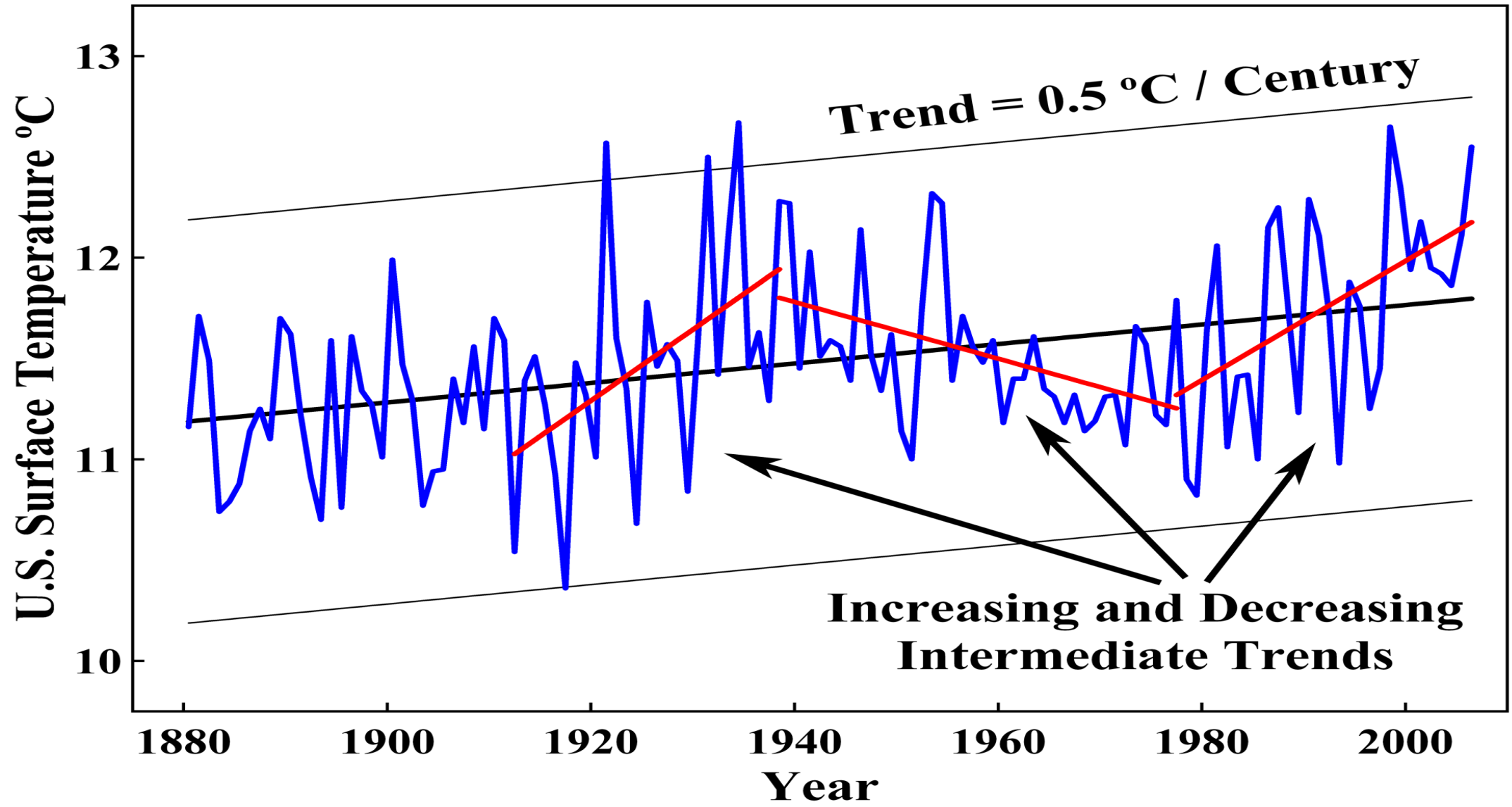
Fig. 20. Imágenes obtenidas desde Google Earth histórico, la fecha corresponde al 12-09-2010

Atmospheric Carbon Dioxide Concentration

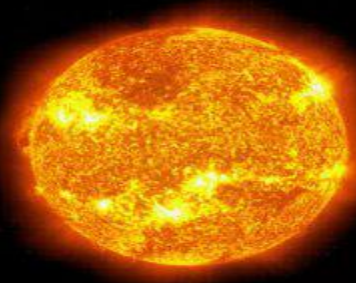


Observed Changes in Global Temperature





Vogt et al 2010



Sun



Gliese 581

